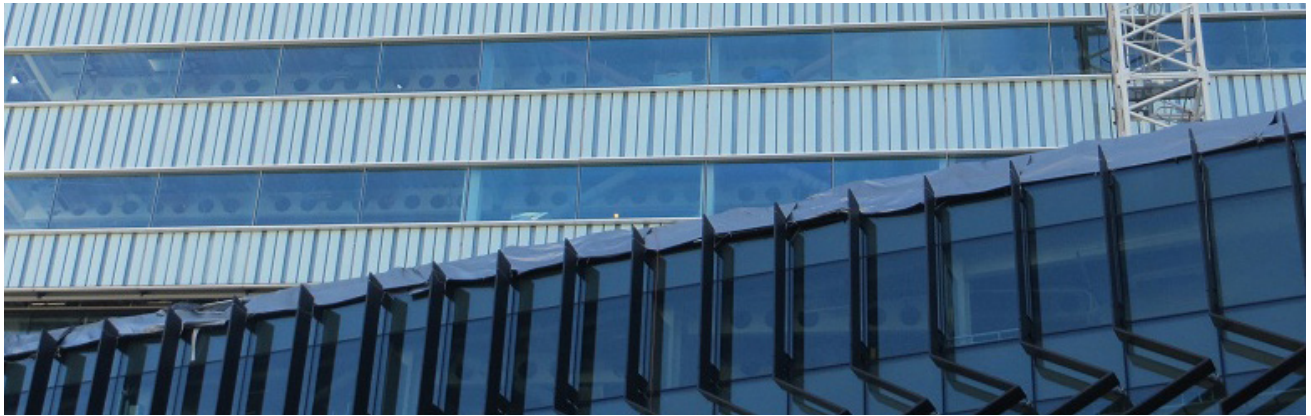


SILVERSTAR Architectural Glass



Triple Silver Neutral Enhanced High Performance Glass

King Abdullah Foundation, Riyadh (KSA)

SILVERSTAR SUPERSELEKT 60/27 T

Most design requirements for both commercial and residential buildings now require very neutral high light transmission coated glass products that incorporate excellent solar protection thus ensuring energy savings. SILVERSTAR SUPERSELEKT 60/27 T ensures these requirements while incorporating triple silver magnetron sputtering technology to give maximum solar protection and thermal insulation..

Characteristics

- Superb selectivity to combine high solar protection and high light transmission
- Blueish external reflection
- Ideal for large and small-scale commercial or residential windows/facades
- Heat-treatable and annealed available ensuring short lead times
- Available in laminated and acoustic laminated and matching spandrel panels
- Ceramic fritting and coating available on one glass pane
- Standard sizes available from 3210 x 2250mm, -2550mm, -6000mm and -9000mm

SILVERSTAR SUPERSELEKT 60/27 T, Double Glazing 6/16/4 Coating Surface 2

Visible					Solar EN 410				EN 673
Light Transmission (%)	Light Reflection ext. (%)	Light Reflection int. (%)	Colour Rendering Index	Colour	Energy Absorption (%)	Solar Factor g EN (%)	g/0.87 SC	Selectivity	Ug W/m ² K (90% Argon)
60	16	16	96	Blue	35	27	32	2.2	1.0

Visible					NFRC 300-2014				
Light Transmission (%)	Light Reflection ext. (%)	Light Reflection int. (%)	Colour Rendering Index	Colour	Energy Absorption (%)	SHGC	Shading Coeff. SC	LSG Ratio	U-Value BTU/hr.ft ² .F (Air)
59	15	16	96	Blue	35	0.25	0.29	2.4	0.23

Color is only indicative and for illustrative purposes and is not part of any specification as it can slightly vary. The indicated values result from insulation glass with EUROFLOAT as the basic glass. Ug-value was determined as per EN 673:2011 for vertical installation. The technical characteristics of the temperable version are adapted to the non-temperable version. They are colour-matched but not the same colour. Annealed options available subject to thermal stress analysis. The performance value shown are nominal and subject to variations due to manufacturing tolerances.