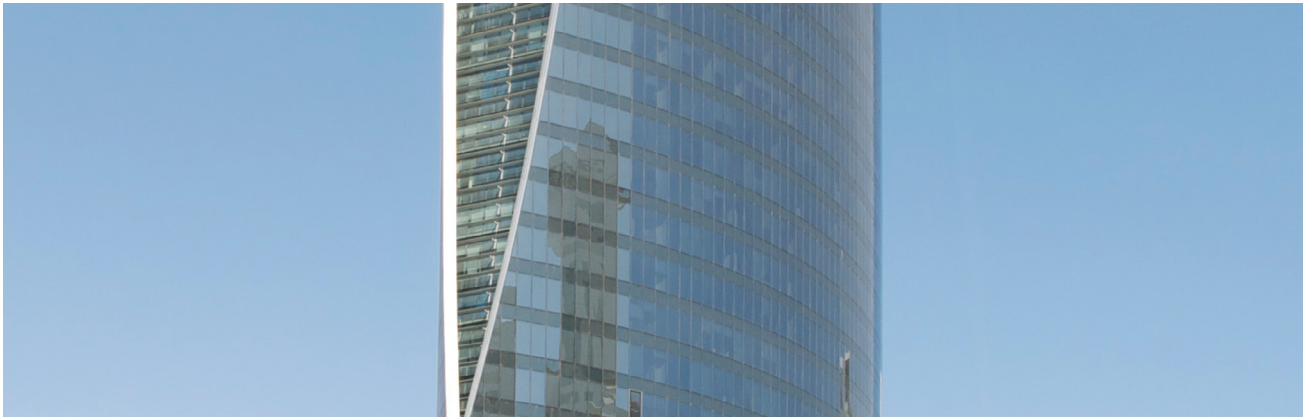


## SILVERSTAR Architectural Glass



Navigation Tower, Dafna (Qatar)

### Solar Control Glass

# SILVERSTAR SUNSTOP Silver 20 T

Design requirements for both commercial and residential buildings now require high reflective coated glass products that incorporate excellent solar protection thus ensuring energy savings. SILVERSTAR SUNSTOP Silver 20 T ensures these requirements while incorporating magnetron sputtering technology to give maximum solar protection and excellent aesthetics.

#### Characteristics

- Silvery external reflection
- Ideal for large and small-scale commercial or residential windows/facades
- Heat-treatable available ensuring short lead times
- Ceramic fritting and coating available on one glass pane
- Standard sizes available from 3210 x 2250mm, -2550mm, -6000mm and -9000mm

#### SILVERSTAR SUNSTOP Silver 20 T, Double Glazing 6/16/4 Coating Surface 2 & EN2plus Surface 3

| Visible                |                           |                           |                        |        | Solar EN 410          |                       |           | EN 673      |                                   |
|------------------------|---------------------------|---------------------------|------------------------|--------|-----------------------|-----------------------|-----------|-------------|-----------------------------------|
| Light Transmission (%) | Light Reflection ext. (%) | Light Reflection int. (%) | Colour Rendering Index | Colour | Energy Absorption (%) | Solar Factor g EN (%) | g/0.87 SC | Selectivity | Ug W/m <sup>2</sup> K (90% Argon) |
| 18                     | 28                        | 28                        | 94                     | Silver | 62                    | 17                    | 19        | 1.1         | 1.1                               |

| Visible                |                           |                           |                        |        | NFRC 300-2014         |      |                   |           |   |
|------------------------|---------------------------|---------------------------|------------------------|--------|-----------------------|------|-------------------|-----------|---|
| Light Transmission (%) | Light Reflection ext. (%) | Light Reflection int. (%) | Colour Rendering Index | Colour | Energy Absorption (%) | SHGC | Shading Coeff. SC | LSG Ratio | U-Value BTU/hr.ft <sup>2</sup> .F (Air) |
| 18                     | 28                        | 28                        | 94                     | Silver | 63                    | 0.18 | 0.21              | 1.0       | 0.24                                    |

Color is only indicative and for illustrative purposes and is not part of any specification as it can slightly vary. The indicated values result from insulation glass with EUROFLOAT as the basic glass. Ug-value was determined as per EN 673:2011 for vertical installation. The technical characteristics of the temperable version are adapted to the non-temperable version. They are colour-matched but not the same colour. Annealed options available subject to thermal stress analysis. The performance value shown are nominal and subject to variations due to manufacturing tolerances.